

PCE

TURBO TWIST

Connection
to the future

A
click

For safest connection!

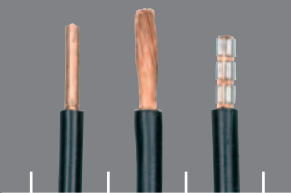
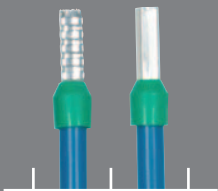
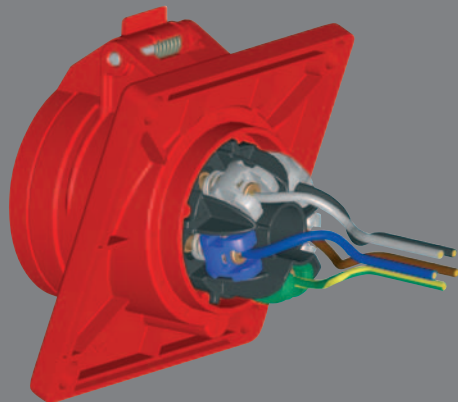
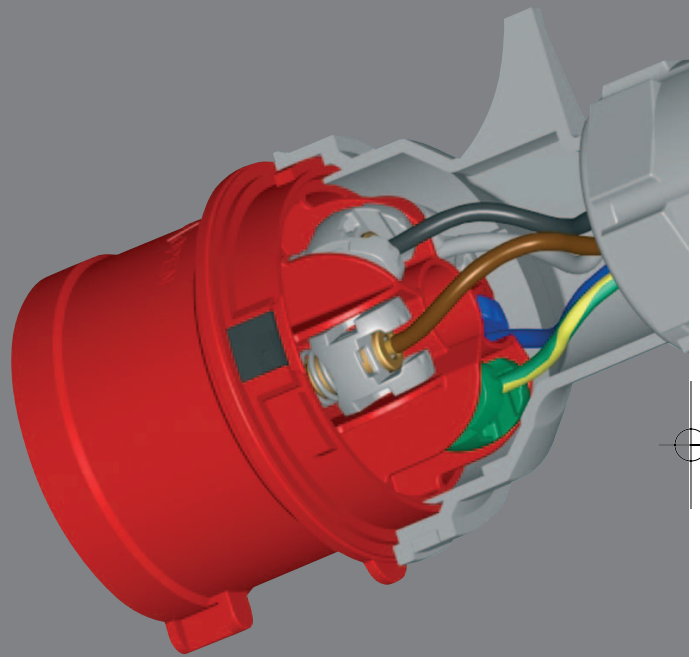


TURBO TWIST

ALL TWIST ADVANTAGES



Safety



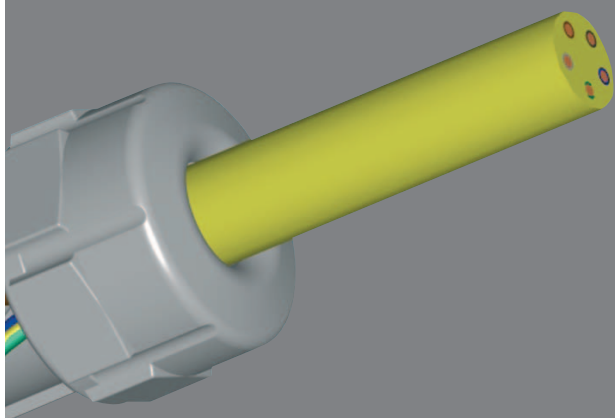
▶ FOR ALL STANDARD CABLE DIAMETERS

▶ FLEXIBLE STRIPPED WIRES
- WITH OR WITHOUT END SLEEVE OR
SOLID STRIPPED WIRES
STRIPPING LENGTHS: 16A FROM 10 TO 12 MM
32A FROM 12 TO 14 MM

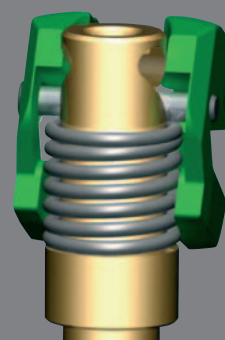
▶ ALSO NICKEL-PLATED CONTACTS AVAILABLE

▶ ÖVE APPROVAL

NEW **SCREWLESS** CONNECTION TECHNOLOGY



Heavy Duty



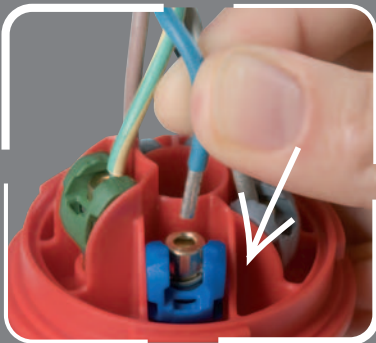
- ▶ FOR EXTREME ENVIRONMENTS
- ▶ EXCEPTIONAL HIGH IMPACT RESISTANCE
- ▶ HIGH TENSILE STRENGTH
- ▶ SHOCK AND VIBRATION RESISTANT TERMINALS
- ▶ INDEPENDENT VISIBLE AND AUDIBLE SNAP-LOCK
- ▶ NO ADJUSTING AND LOCKING BY SEPARATE BOLT

TURBO TWIST

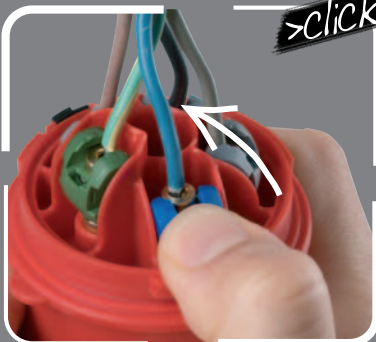
PCE



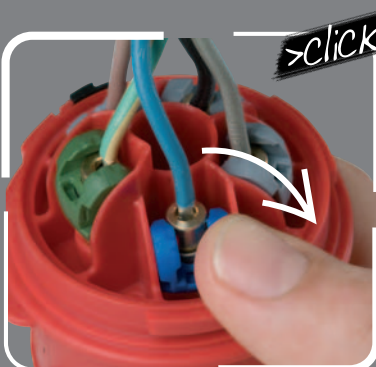
Time saving



1) INSERT WIRE



2) CLOSE TERMINAL



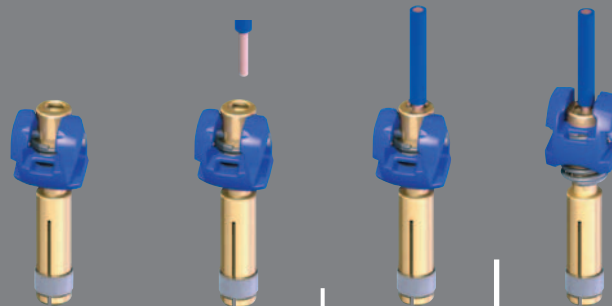
REOPEN TERMINAL

- ▶ SCREWLESS TT-TERMINAL (PCE-PATENT IN PROCESS)
 - OPEN CONTACT TERMINALS, READY FOR ASSEMBLY
 - FAST CABLE INSTALLATION

- ▶ SIMPLE CLOSING AND OPENING JUST BY THUMB PRESSURE








- ▶ ERROR FREE CONNECTION THROUGH CLEARLY MARKED TERMINALS

- ▶ MAINTENANCE-FREE TERMINALS



TURBO TWIST

order numbers

				Cat.No.	Cat.No.	Cat.No.
				110V~ 50/60Hz 4h	230V~ 50/60Hz 3p=6h	400V~ 50/60Hz 5p=6h
		Amp	Poles			
"Turbo Twist" plug - to order nickel-plated contacts please add a "v", e.g. 015-6TTv IP44 splashproof		16	3	013-4TT	013-6TT	
		16	5			015-6TT
		32	5			025-6TT
"Turbo Twist" connector - to order nickel-plated contacts please add a "v", e.g. 215-6TTv IP44 splashproof		16	3	213-4TT**	213-6TT**	
		16	5			215-6TT*
		32	5			225-6TT**
*available from March 2007 **available from April 2007						
"Turbo Twist" flanged socket sloping - to order nickel-plated contacts please add a "v", e.g. 415-6TTv IP44 splashproof		16	3	Flange: 85x70, Fix.Center: 65x50		
		16	5	413-4TT**	413-6TT**	415-6TT*
		32	5			425-6TT**
*available from March 2007 **available from April 2007						
"Turbo Twist" flanged socket sloping - to order nickel-plated contacts please add a "v", e.g. 415-6TTf9v IP44 splashproof		16	5	Flange: 100x92, Fix.center: 85x77		
		32	5			415-6TTf9*
						425-6TTf9*
*available from April 2007						
"Turbo Twist" flanged socket straight - to order nickel-plated contacts please add a "v", e.g. 315-6TTf9v IP44 splashproof		16	3	Flange: 70x70, Fix.center: 56x56		
		16	5	313-4TT*	313-6TT*	315-6TT*
		32	5			325-6TT*
*available second semester 2007						
"Turbo Twist" flanged socket straight - to order nickel-plated contacts please add a "v", e.g. 315-6TTf7v IP44 splashproof		16	3	Flange: 75x75, Fix.center: 60x60		
		16	5	313-4TTf7*	313-6TTf7*	315-6TTf7*
		32	5			325-6TTf7*
*available second semester 2007						
"Turbo Twist" wall socket - to order nickel-plated contacts please add a "v", e.g. 115-6TTv IP44 splashproof		16	3	113-4TT*	113-6TT*	
		16	5			115-6TT*
		32	5			125-6TT*
*available second semester 2007						

PCE

werbung | am inn

PC ELECTRIC Ges.m.b.H.

A-4973 St. Martin/Innkreis

Diesseits 145

AUSTRIA - EUROPE

Tel. +43 / 7751 / 61220

Fax +43 / 7751 / 6969

E-Mail: office@pcelectric.at

www.pcelectric.at

Ver. 02/2007